



Getting Started Guide

Chapter 6

Getting Started with Impress

Presentations in LibreOffice

Copyright

This document is Copyright © 2010–2016 by the LibreOffice Documentation Team. Contributors are listed below. You may distribute it and/or modify it under the terms of either the GNU General Public License (<http://www.gnu.org/licenses/gpl.html>), version 3 or later, or the Creative Commons Attribution License (<http://creativecommons.org/licenses/by/4.0/>), version 4.0 or later.

All trademarks within this guide belong to their legitimate owners.

Contributors

Peter Schofield
Kevin O'Brien

Jean Hollis Weber
Ron Faile Jr.

Hazel Russman
Olivier Hallot

Feedback

Please direct any comments or suggestions about this document to the Documentation Team's mailing list: documentation@global.libreoffice.org

Note: Everything you send to a mailing list, including your email address and any other personal information that is written in the message, is publicly archived and cannot be deleted.

Acknowledgments

This chapter is adapted and updated from Chapter 6 of *Getting Started with OpenOffice.org 3.3*. The contributors to that chapter are:

Agnes Belzunce
Jean Hollis Weber
Stefan A. Keel
Michele Zarri

Barbara M. Tobias
Peter Hillier-Brook
Linda Worthington

Dan Lewis
Claire Wood
Gary Schnabl

Publication date and software version

Published 23 July 2016. Based on LibreOffice 5.1.

Note for Mac users

Some keystrokes and menu items are different on a Mac from those used in Windows and Linux. The table below gives some common substitutions for the instructions in this chapter. For a more detailed list, see the application Help.

Windows or Linux	Mac equivalent	Effect
Tools > Options menu selection	LibreOffice > Preferences	Access setup options
<i>Right-click</i>	<i>Control+click</i> or <i>right-click</i> depending on computer setup	Opens a context menu
<i>Ctrl (Control)</i>	⌘ (<i>Command</i>)	Used with other keys
<i>F5</i>	<i>Shift+⌘+F5</i>	Open the Navigator
<i>F11</i>	⌘+T	Open the Styles and Formatting window

Contents

Copyright	2
Contributors.....	2
Feedback.....	2
Acknowledgments.....	2
Publication date and software version.....	2
Note for Mac users.....	2
What is Impress?	5
Starting Impress	5
Main Impress window	5
Workspace.....	5
Slides pane.....	6
Sidebar.....	7
Toolbars.....	8
Status bar.....	8
Workspace views	9
Normal view.....	9
Outline view.....	9
Notes view.....	10
Handout view.....	11
Slide Sorter view.....	11
Customizing Slide Sorter view.....	12
Moving a slide using Slide Sorter.....	12
Selecting and moving groups of slides.....	12
Working in Slide Sorter view.....	12
Creating a new presentation using the Presentation Wizard	13
Formatting a presentation	16
Inserting slides.....	16
New slide.....	16
Duplicate slide.....	17
Selecting slide layout.....	17
Modifying slide elements.....	18
Adding text.....	19
Adding objects.....	19
Modifying the appearance of all slides.....	19
Modifying the slide show.....	20
Adding and formatting text	20
Using AutoLayout text boxes.....	20
Using text boxes.....	20
Vertical text.....	21
Quick font resizing.....	21
Pasting text.....	22
Pasting unformatted text.....	22

Formatting pasted text.....	22
Creating bulleted and numbered lists.....	23
AutoLayout text boxes.....	23
Text boxes.....	24
Creating a new outline level.....	24
Changing list appearance.....	24
Adding pictures, tables, charts, and media.....	25
Adding pictures.....	25
Adding tables.....	26
Adding charts.....	27
Adding media files.....	27
Adding graphics, spreadsheets, and other objects.....	28
Working with slide masters and styles.....	28
Styles.....	28
Slide masters.....	29
Creating a slide master.....	30
Applying a slide master.....	30
Loading additional slide masters.....	30
Modifying a slide master.....	32
Adding text, footers, and fields to all slides.....	33
Text.....	33
Footers.....	33
Fields.....	34
Adding comments to a presentation.....	35
Setting up a slide show.....	36
One slide set – multiple presentations.....	36
Hiding slides.....	36
Custom slide shows.....	36
Slide transitions.....	36
Slide advance.....	37
Running a slide show.....	37
Presenter Console.....	37
Using Impress Remote control.....	38
Getting Impress Remote.....	38
Connecting the mobile device to the computer.....	38
Enabling remote control in Impress.....	38
Running a slide show with Impress Remote.....	39

What is Impress?

Impress is the presentation (slide show) program included in LibreOffice. You can create slides that contain many different elements, including text, bulleted and numbered lists, tables, charts, and a wide range of graphic objects such as clipart, drawings, and photographs. Impress also includes a spelling checker, a thesaurus, text styles, and background styles.

This chapter includes instructions, screenshots, and hints to guide you through the Impress environment while designing your presentations. Although more difficult designs are mentioned in this chapter, explanations for creating them are in the *Impress Guide*. If you have a working knowledge of how to create slide shows, we recommend you use the *Impress Guide* for your source of information.

To use Impress for more than very simple slide shows requires some knowledge of the elements which the slides contain. Slides that contain text use styles to determine the appearance of that text. Creating drawings in Impress is similar to the Draw program included in LibreOffice. For this reason, we recommend that you also see *Chapter 3 Using Styles and Templates* and *Chapter 7 Getting Started with Draw* in this guide. You may also wish to consult the *Draw Guide* for more details on how to use the drawing tools.

Starting Impress

You can start Impress in several ways, as described in *Chapter 1 Introducing LibreOffice*.

When you start Impress for the first time, the Presentation Wizard may be shown. See “Creating a new presentation using the Presentation Wizard” on page 13. Otherwise, the main Impress window is displayed.

You can turn the Presentation Wizard on and off in **Tools > Options > LibreOffice Impress > General > New document** by selecting or deselecting the **Start with wizard** option.

Main Impress window

The main Impress window (Figure 1) has three parts: the *Slides pane*, *Workspace*, and *Sidebar*. Additionally, several toolbars can be displayed or hidden during the creation of a presentation.



Tip

You can close the *Slides pane* or the *Sidebar* by clicking the X in the upper right corner of each pane or go to **View > Slide Pane** or **View > Sidebar** on the Menu bar to deselect the pane. To reopen a pane, go to **View** on the Menu bar and select **Slide Pane** or **Sidebar** again.

You can also maximize the *Workspace* area by clicking on the Hide/Show marker in the middle of the vertical separator line (highlighted in Figure 1). Using the Hide/Show marker hides, but does not close, the Slide pane or Sidebar. To restore a pane, click again on its Hide/Show marker.

Workspace

The *Workspace* (normally in the center of the main window) opens in the **Normal** view. It has five tabs: **Normal**, **Outline**, **Notes**, **Handout**, and **Slide Sorter**. These five tabs are called View buttons. Since LibreOffice 5.1, the View buttons are not shown by default; but they can be activated by choosing **View > Modes Tab Bar** from the menu bar.

The Workspace below the View buttons changes with the chosen view. The workspace views are described in “Workspace views” on page 9.

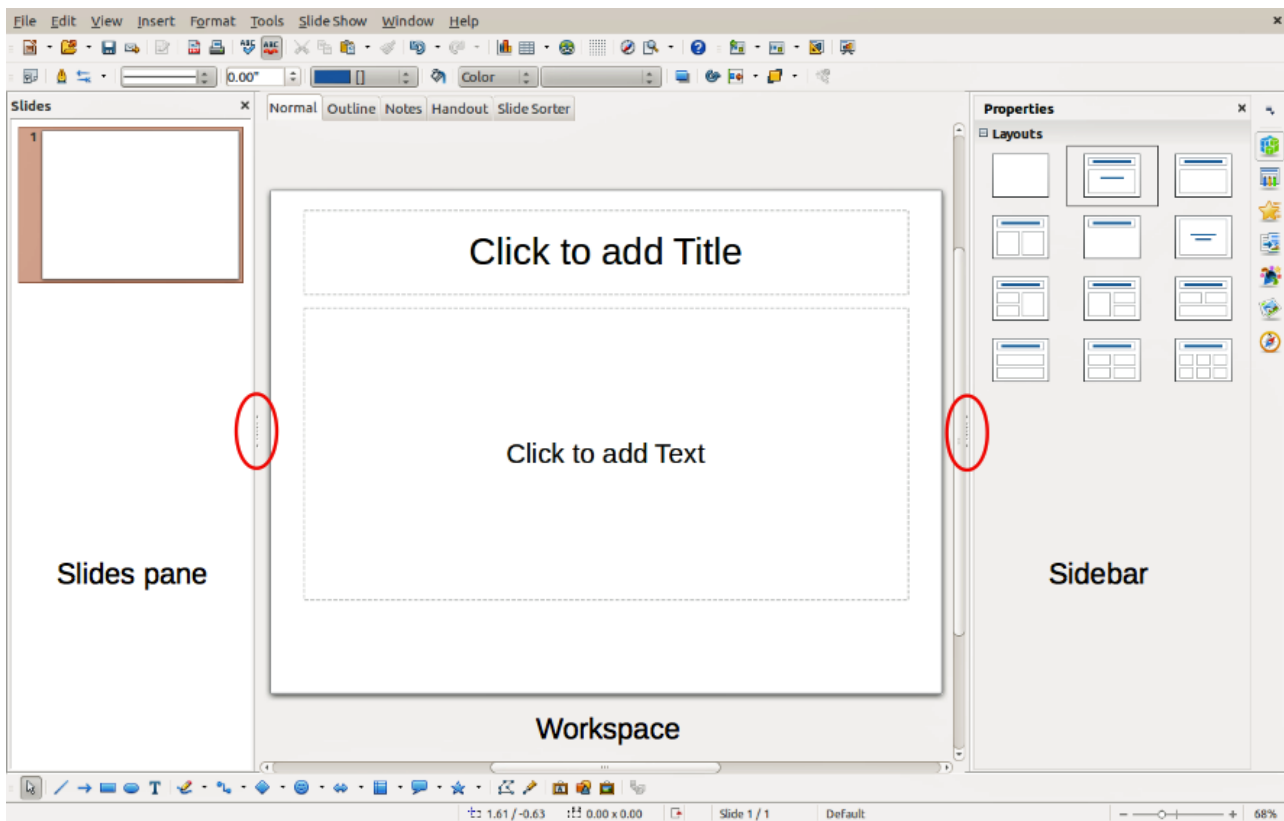


Figure 1: Main window of Impress; ovals indicate the Hide/Show markers. The View Tab Bar is visible in this image.

Slides pane

The *Slides pane* contains thumbnail pictures of the slides in your presentation in the order in which they will be shown, unless you change the slide show order. Clicking a slide in this pane selects it and places it in the *Workspace*. When a slide is in the *Workspace*, you can make changes to it.

Several additional operations can be performed on one or more slides simultaneously in the Slides pane:

- Add new slides to the presentation.
- Mark a slide as hidden so that it will not be shown as part of the presentation.
- Delete a slide from the presentation if it is no longer needed.
- Rename a slide.
- Duplicate a slide (copy and paste).
- Move a slide to another place in the slide stack by dragging and dropping it to the desired position. If the position is not visible in the slide pane, the slide stack will scroll up or down accordingly.

It is also possible to perform the following operations, although there are more efficient methods than using the Slides pane:

- Change the slide transition following the selected slide or after each slide in a group.
- Change the slide design.
- Change slide layout for a group of slides simultaneously.

Sidebar

The *Sidebar* has seven sections. To expand a section you want to use, click on its icon or click on the small triangle at the top of the icons and select a section from the drop down list. Only one section at a time can be open.

Properties

Shows the layouts included within Impress. You can choose the one you want and use it as it is, or modify it to meet your own requirements. However, it is not possible to save customized layouts.

Master Pages

Here you define the page (slide) style for your presentation. Impress includes several designs for Master Pages (slide masters). One of them – Default – is blank, and the rest have background and styled text.



Tip

Go to **Format > Styles > Styles and Formatting** on the Menu bar or press the *F11* key to open the Styles and Formatting dialog, where you can modify the styles used in any master page to suit your purpose. This can be done at any time.

Custom Animation

A variety of animations can be used to emphasize or enhance different elements of each slide. The Custom Animation section provides an easy way to add, change, or remove animations.

Slide Transition

Provides a number of slide transition options. The default is set to *No Transition*, in which the following slide simply replaces the existing one. However, many additional transitions are available. You can also specify the transition speed (slow, medium, fast), choose between an automatic or manual transition, and choose how long the selected slide should be shown (automatic transition only).

Styles and Formatting

Here you can edit and apply graphics styles and create new ones, but you can only edit existing presentation styles. When you edit a style, the changes are automatically applied to all of the elements formatted with this style in your presentation. If you want to ensure that the styles on a specific slide are not updated, create a new master page for the slide.

Gallery

Opens the Impress gallery from which you can insert an object into your presentation either as a copy or as a link. A copy of an object is independent of the original object, so changes to the object have no effect on the copy. A link remains dependent on the original object and changes to the object are reflected in the link.

Navigator

Opens the Impress navigator, in which you can quickly move to another slide or select an object on a slide. It is recommended to give slides and objects in your presentation meaningful names so that you can easily identify them when using the navigator.

Toolbars

Many toolbars can be used during slide creation. They can be displayed or hidden by going to **View > Toolbars** on the Menu bar and selecting from the context menu.

You can also select the icons that you wish to appear on each toolbar. For more information, refer to *Chapter 1 Introducing LibreOffice*.

Many of the toolbars in Impress are similar to the toolbars in Draw. Refer to the *Draw Guide* for details on the functions available and how to use them.

Status bar

The *Status bar* (Figure 2), located at the bottom of the Impress window, contains information that you may find useful when working on a presentation. For details on the contents and use of these fields, see *Chapter 1 Introducing LibreOffice* in this guide and the *Impress Guide Chapter 1 Introducing Impress*.

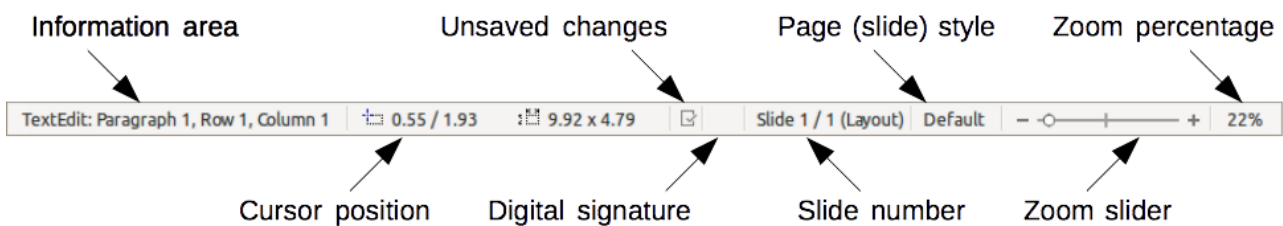


Figure 2: Status bar



Note

The sizes are given in the current measurement unit (not to be confused with the ruler units). This measurement unit is defined in **Tools > Options > LibreOffice Impress > General**.

From left to right, you will find:

- **Information area** – changes depending on the selection. For example:

<i>Example selection</i>	<i>Examples of information shown</i>
Text area	Text Edit: Paragraph x, Row y, Column z
Charts, spreadsheets	Embedded object (OLE) "ObjectName" selected
Graphics	Bitmap with transparency selected

- **Cursor position** – the position of the cursor or of the top left corner of the selection measured from the top left corner of the slide, followed by the width and height of the selection or text box where the cursor is located.
- **Unsaved changes** – a flag indicating that the file needs saving. Double-clicking on this flag opens the file save dialog.
- **Digital signature** – a flag indicating whether the document is digitally signed. After the file has been saved, double-clicking on this flag opens the digital signatures dialog.
- **Slide number** – the slide number currently displayed in the Workspace and the total number of slides in the presentation.
- **Page (slide) style** – the style associated with the slide, handout, or notes page currently in the Workspace. Double-clicking on the style name opens the slide design dialog.

- **Zoom slider** – adjusts the zoom percentage of the Workspace displayed.
- **Zoom percentage** – indicates the zoom percentage of the Workspace displayed. Double-clicking on zoom percentage opens the zoom and layout dialog.

You can hide the Status Bar and its information by going to **View** on the Menu bar and deselecting **Status Bar**.

Workspace views

Each of the Workspace views is designed to ease the completion of certain tasks. It is therefore useful to familiarize yourself with them in order to accomplish those tasks quickly.



Note

Beginning with LibreOffice 5.1, the Workspace View tab bar is hidden by default. Turn it visible by choosing **View > Modes Tab Bar**.



Note

Each Workspace view displays a different set of toolbars when selected. These toolbar sets can be customized by going to **View > Toolbars** on the Menu bar, then check or uncheck the toolbar you want to add or remove.

Normal view

Normal view is the main view for working with individual slides. Use this view to format and design and to add text, graphics, and animation effects.

To place a slide in the slide design area (Normal view) (Figure 1 on page 6), click the slide thumbnail in the Slides pane or double-click it in the Navigator (see *Chapter 1 Introducing LibreOffice* and the *Impress Guide* for more information on the Navigator).

Outline view

Outline view (Figure 3) contains all the slides of the presentation in their numbered sequence. It shows topic titles, bulleted lists, and numbered lists for each slide in outline format. Only the text contained in the default text boxes in each slide is shown, so if your slide includes other text boxes or drawing objects, the text in these objects is not displayed. Slide names are not included either.

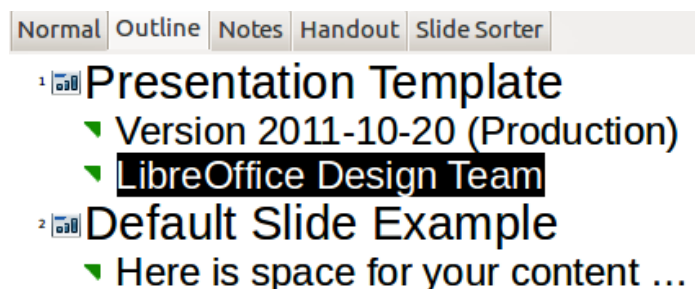


Figure 3: Outline view



Figure 4: Outline level and movement arrows in Text Formatting toolbar

Use Outline view for the following purposes:

- Quickly inserting text for fast content creation or editing, when formatting and adding graphic objects is postponed until the final stages of creating the presentation.
- Making changes in the text of a slide:
 - Adding and deleting the text in a slide as in the Normal view.
 - Moving the paragraphs of text in the selected slide up or down by using the up and down arrow buttons (Move Up or Move Down) on the Text Formatting toolbar (highlighted in Figure 4).
 - Changing the outline level for any of the paragraphs in a slide using the left and right arrow buttons (Promote or Demote) on the Text Formatting toolbar.
 - Moving a paragraph and changing its outline level at the same time using a combination of these four arrow buttons.
- Comparing slides with your outline (if you have prepared one in advance). If you notice from your outline that another slide is needed, you can create it directly in the Outline view or you can return to the Normal view to create it.

Notes view

Use the *Notes view* (Figure 5) to add notes to a slide. These notes are for your information and are not seen by the audience when the presentation is shown.

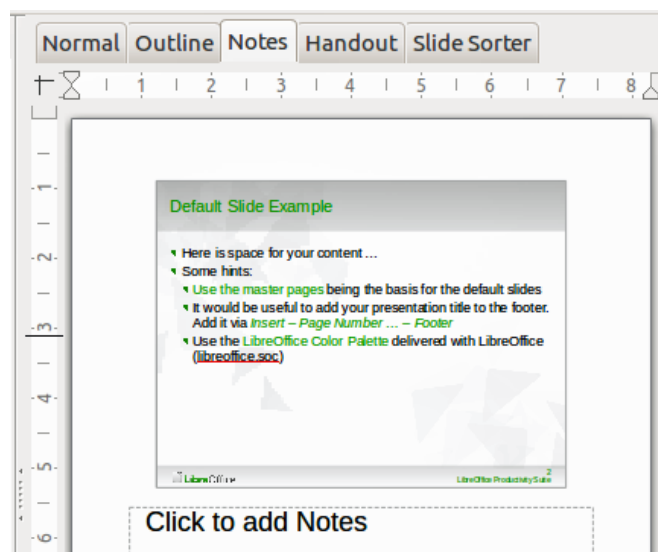


Figure 5: Notes view


- 1) Click the **Notes** tab in the Workspace.
- 2) Select the slide to which you want to add notes: click the slide in the Slides pane, or double-click the slide name in the Navigator.
- 3) In the text box below the slide, click on the words *Click to add notes* and begin typing.

You can resize the Notes text box using the colored resizing handles which appear when you click on the edge of the box. You can also move the box by placing the pointer on the border, then clicking and dragging. To make changes in the text style, click on the Styles and Formatting icon



on the Sidebar.

Handout view

Handout view is for setting up the layout of your slide for a printed handout. Click the *Handout* tab in the workspace and the **Layouts** section opens on the Sidebar (Figure 6). Here you can choose to print 1, 2, 3, 4, 6, or 9 slides per page. If the Layouts section does not open, then click on the Properties icon  at the side of the Sidebar.

Use this view also to customize the information printed on the handout. Refer to the *Impress Guide Chapter 10 Printing, E-mailing, Exporting, and Saving Slide Shows* for instructions on printing slides, handouts, and notes.

Go to **Insert > Page Number**, **Insert > Fields**, or **Insert > Header and Footer** on the Menu bar and the Header and Footer dialog opens. Click on the *Notes and Handouts* tab (Figure 7) and select the elements you want to appear on each handout page and their contents. More details on how to use this dialog are provided in the *Impress Guide*.

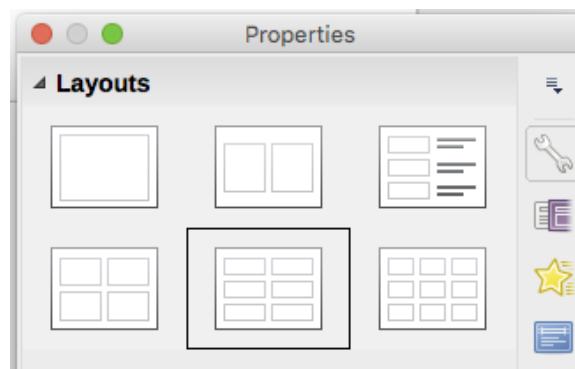


Figure 6: Handout layouts

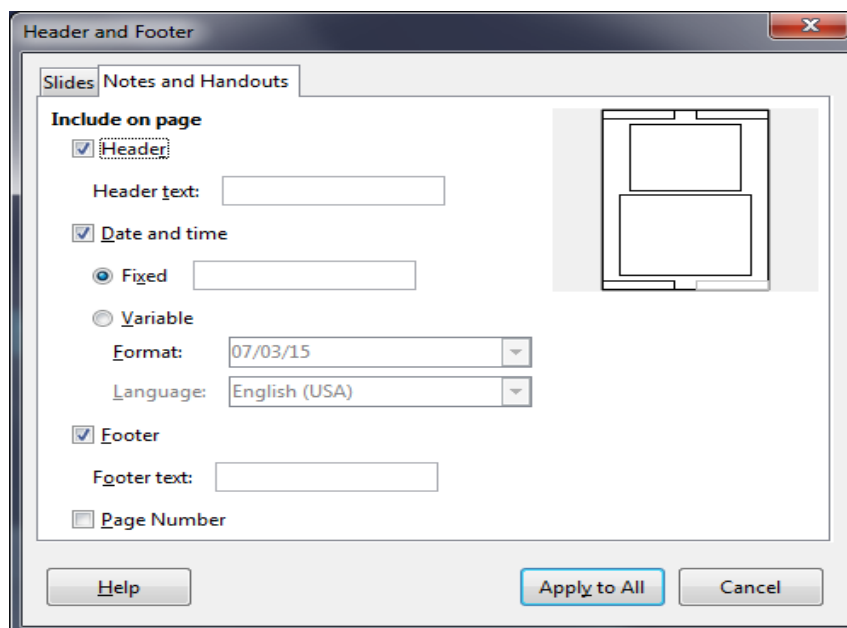


Figure 7: Header and Footer dialog – Notes and Handouts page

Slide Sorter view

Slide Sorter view (Figure 8) contains all of the slide thumbnails. Use this view to work with a group of slides or with only one slide.

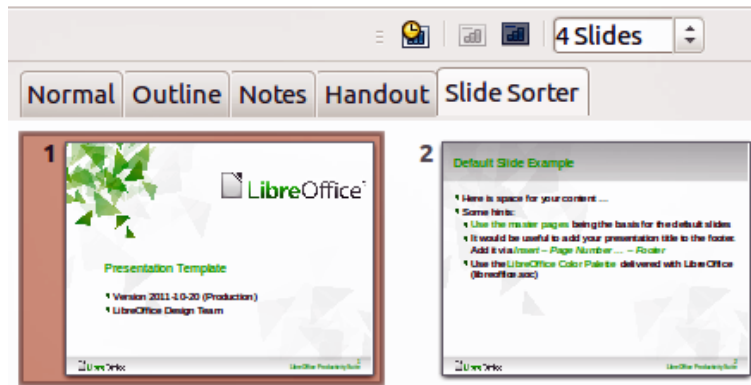


Figure 8: Slide Sorter view

Customizing Slide Sorter view

To change the number of slides per row:

- 1) Go to **View > Toolbars** and select **Slide Sorter** and **Slide View** to show or hide the Slide Sorter and Slide View toolbars (Figure 9).
- 2) Adjust the number of slides (up to a maximum of 15).



Figure 9: Slide Sorter and Slide View toolbars

Moving a slide using Slide Sorter

To move a slide in a presentation in the Slide Sorter:

- 1) Click the slide and the slide is highlighted (Figure 8).
- 2) Drag and drop the slide to the location you want.

Selecting and moving groups of slides

To select a group of slides, use one of these methods:

- Using the *Ctrl* key – click on the first slide and, while pressing the *Ctrl* key, select the other desired slides.
- Using the *Shift* key – click on the first slide, and while pressing the *Shift* key, select the final slide in the group. This selects all of the other slides between the first and the last slide selected.
- Using the mouse – click slightly to one side (left or right) of the first slide to be selected. Hold down the left mouse button and drag the cursor until all of the slides you want selected are highlighted.

To move a group of slides, select them and then drag and drop the group to their new location.

Working in Slide Sorter view

You can work with slides in the Slide Sorter view just as you can in the Slide pane. To make changes, right-click a slide and choose any of the following from the context menu:

- **New Slide** – adds a new slide after the selected slide (see “New slide” on page 16).
- **Duplicate Slide** – creates a duplicate of the selected slide and places the new slide immediately after the selected slide (see “Duplicate slide” on page 17).
- **Delete Slide** – deletes the selected slide.

- **Rename Slide** – allows you to rename the selected slide.
- **Slide Layout** – allows you to change the layout of the selected slide.
- **Slide Transition** – allows you to change the transition of one or a group of selected slides.
- **Hide Slide** – any slides that are hidden are not shown in the slide show.
- **Cut** – removes the selected slide and saves it to the clipboard.
- **Copy** – copies the selected slide to the clipboard without removing it.
- **Paste** – inserts a slide from the clipboard after the selected slide.

Creating a new presentation using the Presentation Wizard

This section describes how to start a new presentation using the Presentation Wizard.



Tip

The first thing to do is decide on the purpose of the presentation and set out a plan. Although you can make changes as you go, you will save a lot of time by having an initial idea of who the audience will be, the structure, the content, and how the presentation will be delivered.

When you start Impress, the Presentation Wizard may appear (Figure 10).

- 1) In step 1, under **Type**, choose one of the options. These options are covered in the *Impress Guide*.
 - *Empty presentation* creates a blank presentation.
 - *From template* uses a template design already created as the basis for a new presentation. The wizard changes to show a list of available templates. Choose the template you want.
 - *Open existing presentation* continues work on a previously created presentation. The wizard changes to show a list of existing presentations. Choose the presentation you want.

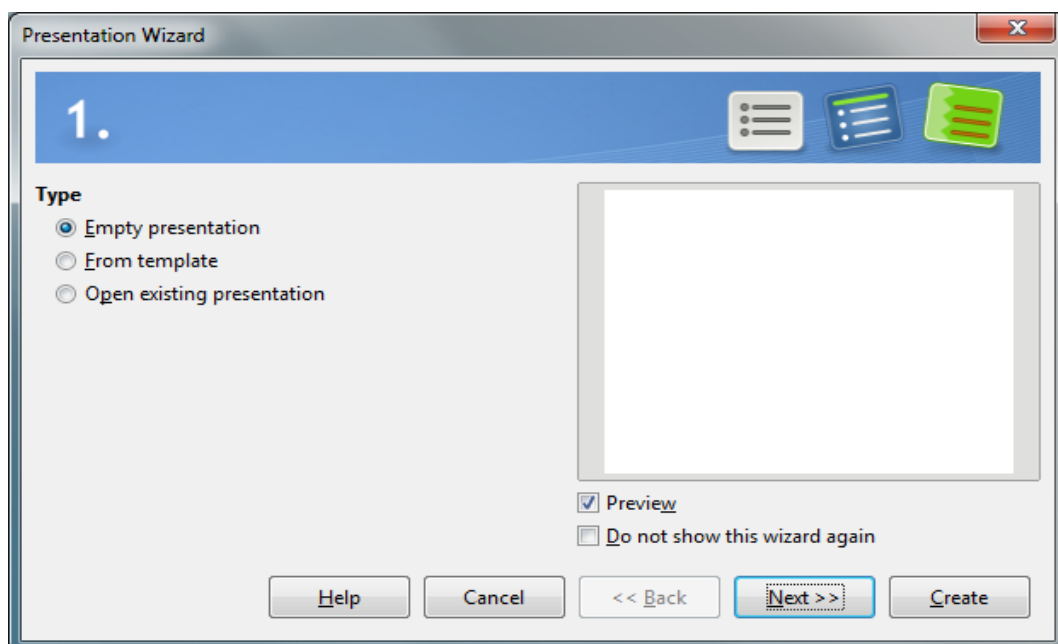


Figure 10: Choosing the type of presentation

- 2) Click **Next**. Figure 11 shows the **Presentation Wizard** step 2 as it appears if you selected Empty Presentation at step 1. If you selected *From template*, an example slide is shown in the Preview box.
- 3) Choose a design under **Select a slide design**. The slide design section gives you two main choices: *Presentation Backgrounds* and *Presentations*. Each one has a list of choices for slide designs. If you want to use one of these other than <Original>, click it to select it.
 - The types of Presentation Backgrounds are shown in Figure 11. When you select a presentation background, you will see a preview of the slide design in the Preview window.
 - <Original> is for a blank presentation slide design.

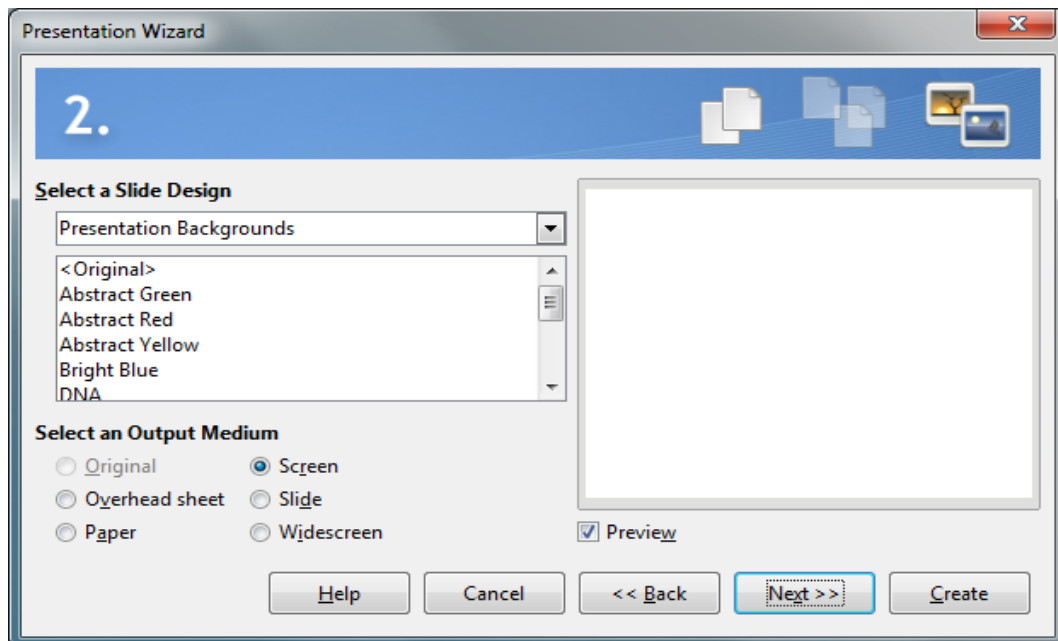


Figure 11: Selecting a slide design

- 4) Select how the presentation will be used under **Select an output medium**. The majority of presentations are created for computer screen display so it is recommended to select *Screen*. You can change the page format at any time.



Note

The Screen page is set by default for a 4:3 display (28cm x 21cm) so it is not suitable for modern widescreen displays. Use the Widescreen option instead. You can also change the slide size and proportions at any time by switching to Normal view and selecting **Slide > Page/Slide Properties...**

- 5) Click **Next** and step 3 of the **Presentation Wizard** appears (Figure 12).
 - a) Choose the desired slide transition from the *Effect* drop-down menu.
 - b) Select the desired **speed** for the transition between the different slides in the presentation from the **Speed** drop-down menu. *Medium* is a good choice for now.
 - c) Select the presentation type. For most purposes, choose Default; you can change this later. For details on the choices under Automatic, see the *Impress Guide*.

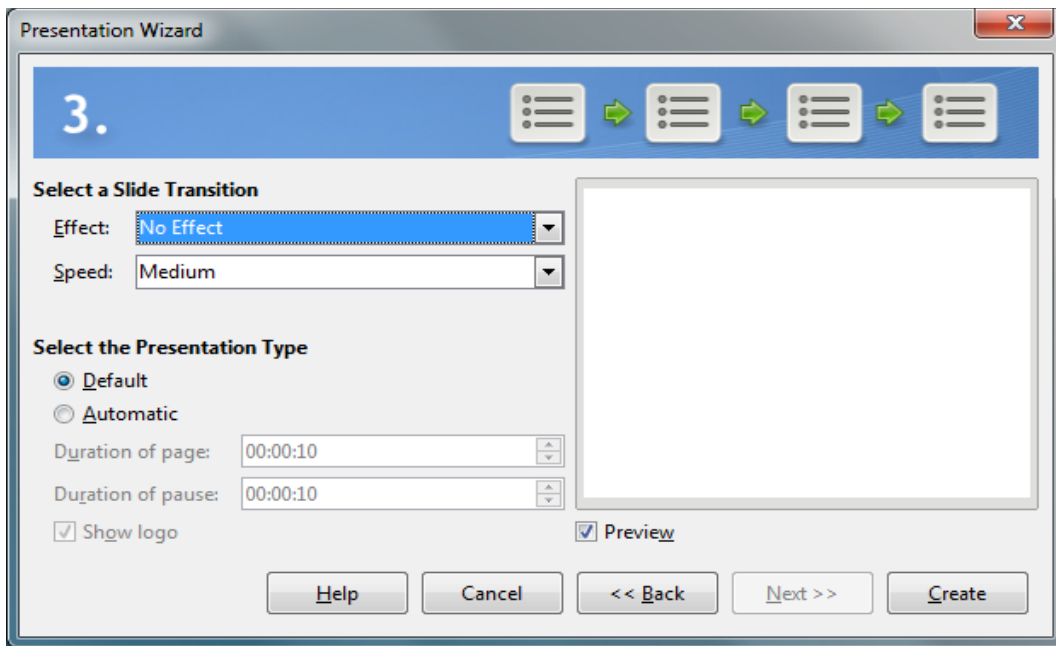


Figure 12: Selecting a slide transition effect



Note

If you did not select a template in step 1 of the Presentation Wizard, then steps 4 and 5 will not appear after step 3. Click **Create** and your new presentation is created.

- 6) Click **Next**. In step 4 of the Presentation Wizard appears, you can enter information about your company and the presentation you are creating.

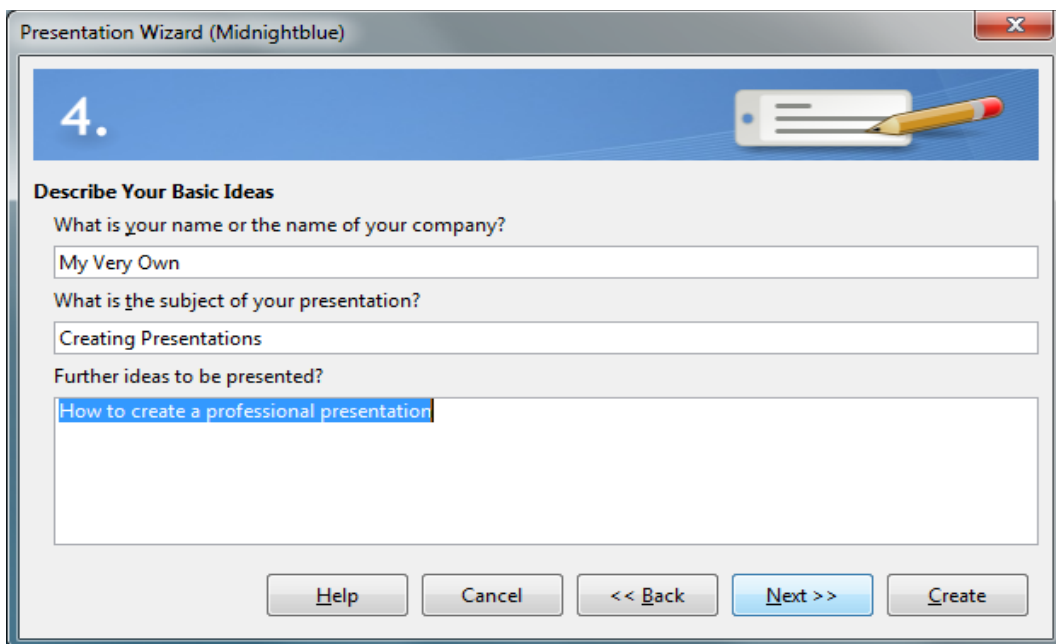


Figure 13: Entering information about your presentation

- 7) Click **Next**. In step 5, the Presentation Wizard shows a preview of what your presentation will look like (Figure 14). If the preview does not appear, select *Preview*.
- 8) If you want to create a summary of your presentation, select *Create summary*.
- 9) Click **Create** and your new presentation is created.

Tip

You can accept the default values for both *Effect* and *Speed* unless you are skilled at creating presentations. Both of these values can be changed later while working with slide transitions and animations. These two features are explained in more detail in the *Impress Guide Chapter 9 Slide Shows*.

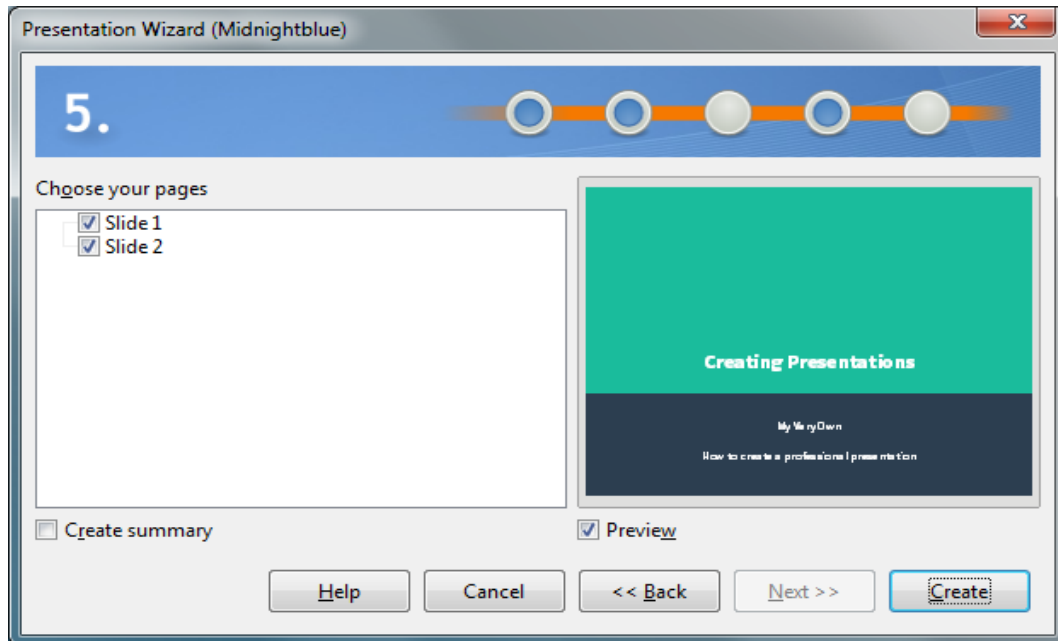


Figure 14: Presentation preview

Formatting a presentation


A new presentation contains only one empty slide. In this section we will start adding new slides and preparing them for the intended contents.

Inserting slides

New slide

A new slide can be inserted into a presentation as follows:

- 1) Go to **Slide** on the Menu bar and select **New Page/Slide**.
Or, right-click on a slide in the Slides Pane or Slide Sorter view and select **New Slide** from the context menu.
Or, right-click in an empty space in the Workspace and select **Slide > New Slide** from the context menu.

Or click the **NewPage/Slide** icon  in the Presentation toolbar. You can also select the desired layout of the new slide if you click on the small downward arrow of the icon. If the Presentation toolbar is not visible, go to **View > Toolbars** on the Menu bar and select **Presentation** from the list.

- 2) A new slide is inserted after the selected slide in the presentation.

Duplicate slide

Sometimes, rather than starting from a new slide you may want to duplicate a slide already included in your presentation. To duplicate a slide:

- 1) Select the slide you want to duplicate from the Slides Pane.
- 2) Go to **Slide** on the Menu bar and select **Duplicate Page/Slide**.

Or, right-click on the slide in the Slides Pane or Slide Sorter view and select **Duplicate Slide** from the context menu.


Or, right-click on a slide in the Workspace and select **Slide > Duplicate Slide** from the context menu.

Or, click on the triangle to the right of the **Slide** icon in the Presentation toolbar and select **Duplicate Page/Slide** from the context menu. If the Presentation toolbar is not visible, go to **View > Toolbars** on the Menu bar and select **Presentation** from the list.

- 3) A duplicate slide is inserted after the selected slide in the presentation.

Selecting slide layout

When creating a presentation, the first slide is normally a title slide. You can use either a blank layout or one of the title layouts as your title slide.

Click on the Properties icon  at the side of the Sidebar to open **Layouts** section and display the available layouts (Figure 15). The layouts included in LibreOffice range from a blank slide to a slide with six contents boxes and a title.

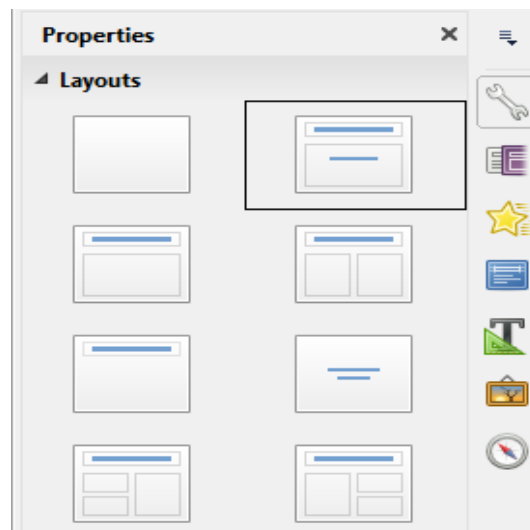


Figure 15: Available slide layouts

To create a title, if one of the title layouts has been selected, click on *Click to add title* and then type the title text. To add text content, depending on the slide layout selected, click on *Click to add text*. To adjust the formatting of the title, subtitle or content modify the presentation style; see the *Impress Guide Chapter 2 Using Slide Masters, Styles, and Templates*.



Note

Text and graphical elements can be readjusted at any time during the preparation of the presentation, but changing the layout of a slide that already contains some content can have an effect on the content format. Therefore, it is recommended that you pay particular attention to the layout you select to prevent any loss of content.

Tip

To view the names for the included layouts, use the Tooltip feature: position the cursor on an icon in the Layout section (or on any toolbar icon) and its name will be displayed in a small rectangle.

In **Tools > Options > LibreOffice > General > Help**, select the **Extended tips** option to get more detailed tooltip information.

To select or change the layout of a slide, select the slide in the Slides Pane so that it appears in the Workspace and select the desired layout from the Layouts section in the Sidebar. Several layouts contain one or more content boxes. Each of these content boxes can be configured to contain text, movies, images, charts or tables.

You can choose the type of content by clicking on the corresponding icon that is displayed in the middle of the content box as shown in Figure 16. If you intend to use the content box for text, click on *Click to add text*.

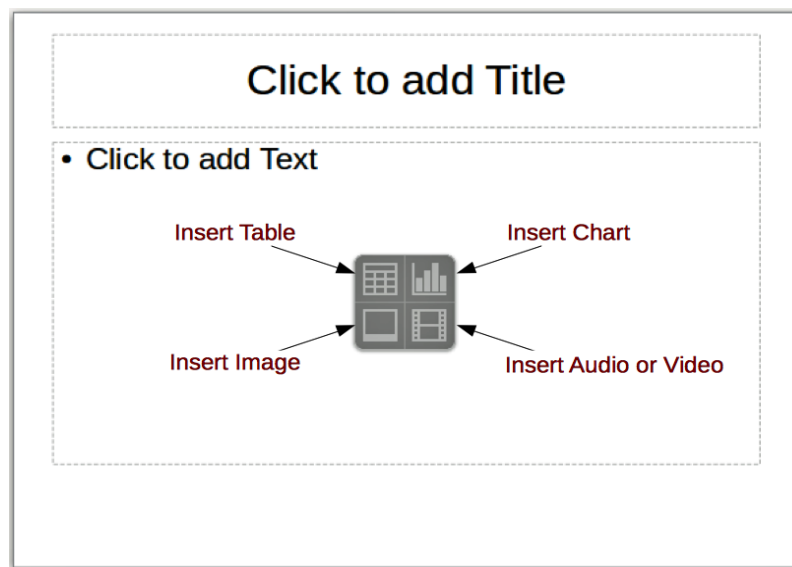


Figure 16: Selecting content type

Modifying slide elements

A slide contains elements that were included in the slide master, as well as those elements included in the selected slide layout. However, it is unlikely that the predefined layouts will suit all your needs for your presentation. You may want to remove elements that are not required or insert objects such as text and graphics.

Although Impress does not allow you to create new layouts, you can resize and move the layout elements. It is also possible to add elements without being limited to the size and position of the layout boxes.

To resize a contents box, click on the outer frame so that the resizing handles are displayed. To move it, place the mouse cursor on the frame so that the cursor changes shape. You can now click and drag the contents box to a new position on the slide.

To remove any unwanted element:

- 1) Click the element to highlight it. The resizing handles show that it is selected.
- 2) Press the *Delete* key to remove it.



Note

Changes to any of the layouts included in Impress can only be made using **View > Normal**, which is the default. Attempting any changes by modifying a slide master, although possible, may result in unpredictable results and requires extra care as well as a certain amount of trial and error.

Adding text

To add text to a slide that contains a text frame, click on *Click to add text* in the text frame and then type your text. The Outline styles are automatically applied to the text as you insert it. You can change the outline level of each paragraph as well as its position within the text by using the arrow buttons on the *Text Formatting* toolbar (see Figure 4 and “Outline view” on page 9) or using the Tab key while positioning the cursor at the beginning of the paragraph. For more information on text, see “Adding and formatting text” on page 20.

Adding objects

To add any objects to a slide, for example a picture, clipart, drawing, photograph, or spreadsheet, click on **Insert** then select from the drop down menu what type of object you want to insert. For more information, see “Adding pictures, tables, charts, and media” on page 25.

Modifying the appearance of all slides

To change the background and other characteristics of all slides in the presentation, you need to modify the master page or choose a different master page as explained in “Working with slide masters and styles” on page 28.

A *Slide Master* is a slide with a specified set of characteristics that acts as a template and is used as the starting point for creating other slides. These characteristics include slide background, objects in the background, formatting of any text used, and any background graphics.



Note

LibreOffice uses three terms for a slide that is used to create other slides: *master slide*, *slide master*, and *master page*. This book uses the term *slide master*, except when describing the user interface.

Impress has a range of slide masters and these are found in the **Master Pages** section of the Sidebar. You can also create and save additional slide masters or add more from other sources. See the *Impress Guide Chapter 2 Using Slide Masters, Styles, and Templates* for more information on creating and modifying slide masters.

If all you need to do is to change the background, you can use a shortcut:

- 1) Select **Slide > Page/Slide Properties...** and go to the *Background* tab on the **Page Setup** dialog that opens.
- 2) Select the desired background between solid color, gradient, hatching, and bitmap.
- 3) Click **OK** to apply it.
- 4) A dialog opens asking if the background should be applied to all the slides. Click **Yes** if you want all the slides modified and Impress will automatically modify the master page for you.



Note

Inserting and correctly formatting a background is beyond the scope of this chapter, but you can find all the information you need in the *Draw Guide Chapter 4 Changing Object Attributes* or in the *Impress Guide Chapter 6 Formatting Graphic Objects*.

Modifying the slide show

By default the slide show will display all the slides in the same order as they appear in the slide sorter, without any transition between slides. You need to use keyboard input or mouse interaction to move from one slide to the next.

You can use **Slide Show** on the Menu bar to change the order of the slides, choose which ones are shown, automate moving from one slide to the next, and other settings. To change the slide transition, animate slides, add a soundtrack to the presentation, and make other enhancements, you need to use functions in the Sidebar. See the *Impress Guide* for details on how to use all of these features.

Adding and formatting text

Many of your slides are likely to contain some text. This section gives some guidelines on how to add text and change its appearance. Text used in slides is contained in *text boxes*. For more information on adding and formatting text, see the *Impress Guide Chapter 3 Adding and Formatting Text*.

You can add two types of text boxes to a slide:


- Choose a predefined layout from the *Layouts* section of the Sidebar and do not select any special content type. These text boxes are called **AutoLayout** text boxes.
- Create a text box using the **Text** icon  on the Standard toolbar (Figure 17) or the Text toolbar (Figure 18), or use the keyboard shortcut *F2*.



Figure 17: Standard toolbar



Figure 18: Text toolbar

Using AutoLayout text boxes

- 1) Make sure Normal view is selected.
- 2) Click in the text box that reads **Click to add text**.
- 3) Type or paste your text in the text box.

Using text boxes

- 1) Make sure Normal view is selected.
- 2) Click on the **Text** icon on the Standard or Text toolbar or use the keyboard shortcut *F2*. If the Standard or Text toolbars are not visible, go to **View > Toolbars** on the Menu bar and select **Standard** or **Text**.

- 3) Click and drag to draw a box for the text on the slide. Do not worry about the vertical size and position as the text box will expand if needed as you type.
- 4) Release the mouse button when finished. The cursor appears in the text box, which is now in edit mode (a colored border shown in Figure 19).
- 5) Type or paste your text in the text box.
- 6) Click outside the text box to deselect it.

You can move, resize, and delete text boxes. For more information, see the *Impress Guide Chapter 3 Adding and Formatting Text*.

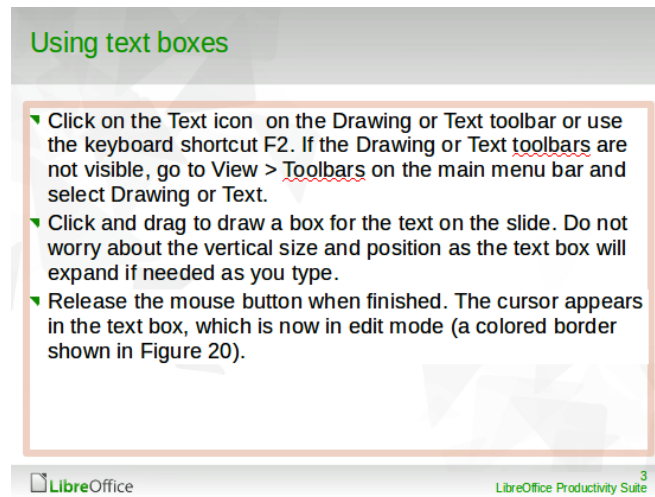



Figure 19: Creating and editing text boxes

Vertical text

In addition to the normal text boxes where text is horizontally aligned, it is possible to insert text boxes where the text is aligned vertically. Vertical text is available only when Asian languages are enabled in **Tools > Options > Language Settings > Languages**. Click the **Vertical Text** icon  in the Standard toolbar or Text toolbar to create a vertical text box.

Quick font resizing

Impress has an **Increase Font** icon and a **Decrease Font** icon on the Text Formatting toolbar (highlighted in Figure 20) to increase or decrease the font size of selected text. The amount by which the font size changes depends on the standard sizes available for the font in use.



Figure 20: Quick font resizing on Text Formatting toolbar



Note

AutoLayout text boxes can automatically resize fonts to let the box contain all the text you insert. If you insert a long piece of text, the font size may shrink to fit into the box. Otherwise, the font keeps its default size.

Pasting text

Text may be inserted into the text box by copying it from another document and pasting it into Impress. However, pasted text will probably not match the formatting of the surrounding text on the slide or that of the other slides in the presentation. This may be what you want on some occasions; however, in most cases you want to make sure that the presentation style is consistent and does not become a patchwork of different paragraph styles, font types, bullet points and so on. There are several ways to ensure consistency in your presentation.

Pasting unformatted text

It is normally good practice to paste text without formatting and apply the formatting later. To paste text without formatting:

- Use the keyboard shortcut *Ctrl+Shift+V* and select **Unformatted text** from the Paste Special dialog that opens.
- Or click on the small triangle next to the **Paste** icon in the Standard toolbar and select **Unformatted text** from the context menu.

The unformatted text will be formatted with the outline or paragraph style at the cursor position in an AutoLayout text box or with the default graphic style in a normal text box.

Formatting pasted text

When formatting pasted text, you can use the tools available on the Text Formatting toolbar (Figure 21), or the tools available in the *Character* and *Paragraph* sections of the *Properties* deck in the Sidebar (Figure 22). If the *Character* and *Paragraph* sections do not automatically open after

selecting some text, click on the Properties icon  at the side of the Sidebar.



Figure 21: Text Formatting toolbar

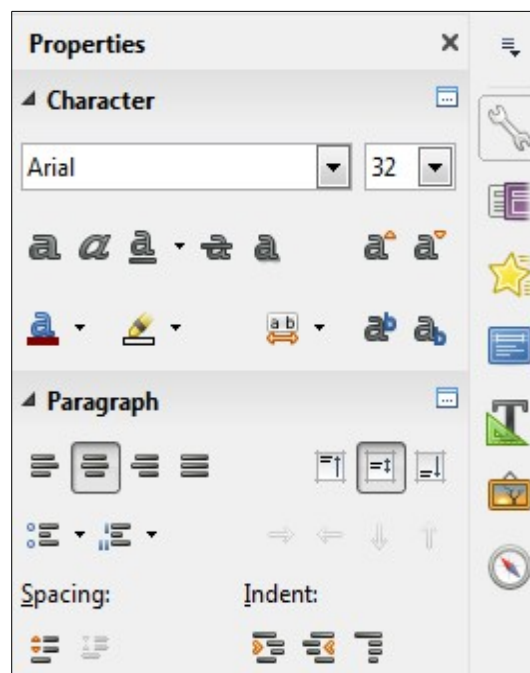


Figure 22: Sidebar Character section

If you are pasting the text into an **AutoLayout** text box, you need to apply the appropriate *outline style* to the text to give it the same look and feel as the rest of the presentation.

- 1) Paste the text in the desired position.
- 2) Select the text you have just pasted.
- 3) Select **Format > Default formatting** on the Menu bar.
- 4) Use the four arrow buttons on the Text Formatting toolbar (highlighted in Figure 4 on page 9) to move the text to the appropriate position and give it the appropriate outline level.
 - Left arrow promotes a list entry by one level (for example from Outline 3 to Outline 2). You can get the same result by placing the cursor at the beginning of the paragraph and pressing the *Shift + Tab* keys.
 - Right arrow button demotes a list entry by one level. Press the *Tab* key to get the same result after placing the cursor at the beginning of the paragraph.
 - Up arrow moves a list entry up in the list order.
 - Down arrow moves a list entry down in the list order.
- 5) Apply any necessary manual formatting to the text to change font attributes, tabs, and so on.

If you are pasting text in a **text box**, you can still use styles to format the text quickly. Only one graphic style can be applied to the pasted text, as follows:

- 1) Paste the text in the desired position.
- 2) Select the text you have just pasted.
- 3) Select the desired graphical style to format the text.
- 4) Apply any necessary manual formatting to the text to change font attributes, tabs, and so on.

Creating bulleted and numbered lists

The procedure to create a bulleted or numbered list is quite different depending on the type of text box used, although the tools to manage the list and customize the appearance are the same. In AutoLayout text boxes, the outline styles available are, by default, bulleted lists. For normal text boxes an additional step is required to create a bulleted list.

AutoLayout text boxes


AutoLayout text boxes included in the available layouts are already formatted as a bulleted list. Create a slide with a bulleted list as follows:

- 1) From the Layout pane, choose a slide design that contains a text box.
- 2) In the text box, click on **Click to add text**.
- 3) Type your text and press the *Enter* key to start a new bulleted point.

The default list type is a bulleted list. Methods for changing the appearance of a list are explained in “Changing list appearance” on page 24.





Tip

Press *Shift+Enter* to start a new line without creating a new bullet point. The new line will have the same indentation as the previous line. To switch off bullets altogether, click the **Bullets On/Off** icon  on the Text Formatting toolbar. If the Text Formatting toolbar is not displayed, go to **View > Toolbar > Text Formatting** on the Menu bar.

Text boxes

Create a bulleted list in a text box as follows:

- 1) Click the **Text** icon  on the Standard toolbar and draw a text box on your slide.
- 2) Click the **Bullets On/Off** icon  on the Text Formatting toolbar.
- 3) Type the text and press *Enter* to start a new bulleted line.

The default list type is a bulleted list. Methods for changing the appearance of a list are explained in “Changing list appearance” on page 24.

Creating a new outline level

In AutoLayout text boxes, create a new outline level as follows:

- 1) If necessary, press *Enter* to begin a new list entry.
- 2) To demote a list entry (move it to the right), press the *Tab* key or click the Demote (right arrow) icon on the Text Formatting toolbar or use the keyboard shortcut *Alt+Shift+Right*. The list entry moves to the right and is indented to the next outline level.
- 3) To promote a list entry (move it to the left), press *Shift+Tab* or click the Promote (left arrow) icon on the Text Formatting toolbar or use the keyboard shortcut *Alt+Shift+Left*. The list entry moves to the left and is indented at the next higher level.
- 4) To create a new list entry at the same level as the previous one, press *Enter* again.

In the AutoLayout text boxes, promoting or demoting an item in the list corresponds to applying a different outline style. The second outline level corresponds to Outline 2 style, the third outline level to Outline 3 style, and so on. A change in level and style produces other changes, for example, to font size, bullet type, and so on.

In text boxes, a new outline level can only be created by using the *Tab* key to demote the list entry and the *Shift+Tab* key combination to promote the list entry.



Note



Do not try to change the outline level by selecting the text and then clicking the desired outline style as you would in Writer. Due to the way that presentation styles work in Impress, it is not possible to change the level in this way.

Changing list appearance

You can fully customize list appearance by changing the bullet type or numbering for the entire list or for only a single entry. All of the changes can be made using the Bullets and Numbering dialog (Figure 23), which is accessed by going to **Format > Bullets and Numbering** on the Menu bar or

by clicking on the **Bullets Icon**  or the **Numbering icon**  on the Text Formatting toolbar.

For the entire list:

- 1) Select the entire list or click on the border of the text box so that the resizing handles are displayed.
- 2) Select **Format > Bullets and Numbering** on the Menu bar or click on the **Bullets**  or **Numbering** icon  on the Text Formatting toolbar.

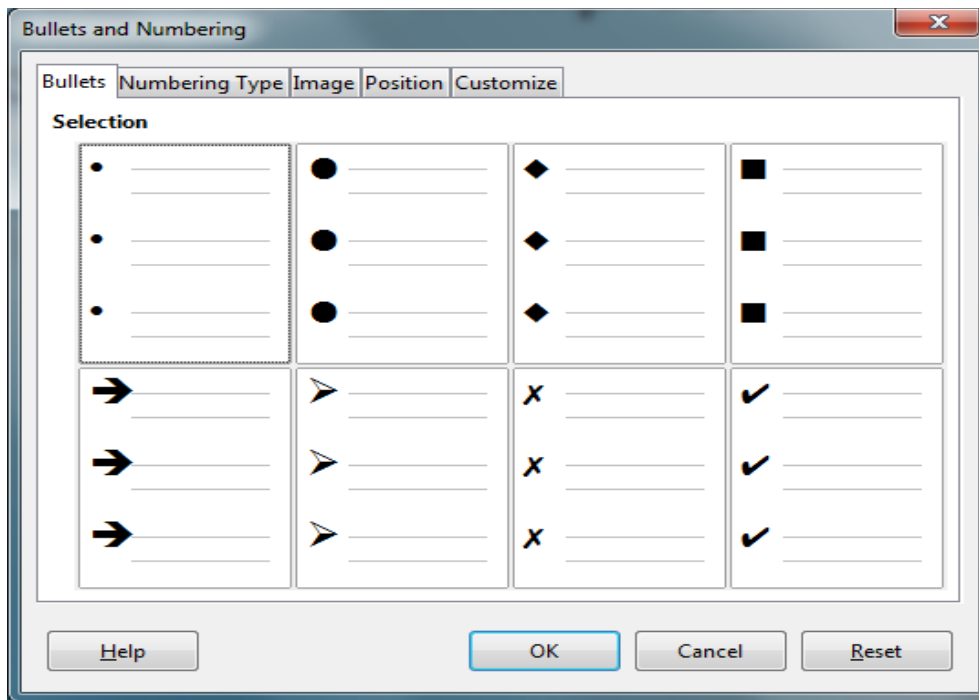


Figure 23: Bullets and Numbering dialog

- 3) The Bullets and Numbering dialog (Figure 23) contains five pages: Bullets, Numbering type, Image, Position, and Customize.
 - If a bullet list is needed, select the desired bullet style from the default styles available on the *Bullets* page.
 - If a graphics style is needed, select one from those available on the *Image* page.
 - If a numbered list is needed, select one of the default numbering styles on the *Numbering type* page.
 - Use the *Position* page to set the indent and numbering spacing and alignment of your list.
 - Use the *Customize* page to customize the numbering, color, relative size, and character used for your list.
- 4) For a single list entry, click anywhere in the text and then follow steps 2 and 3 above.

If the list was created in an AutoLayout text box, then an alternative way to change the entire list is to modify the Outline styles. Changes made to the outline style will apply to all the slides using them.

Adding pictures, tables, charts, and media

A contents box can contain pictures, tables, charts, or media as well as text. This section provides a quick overview of how to work with these objects. For more information on adding pictures, tables, charts, or media, please refer to the *Impress Guide*.

Adding pictures

To add a picture to a contents box:

- 1) Go to **Insert > Image** on the Menu bar and then select either **From file** or **Scan**.

- 2) Alternatively, after inserting a new slide, click the **Insert Image** icon (Figure 16 on page 18) on the new slide and select the file from the Insert Image dialog that opens. To see a preview of the picture, select **Preview** at the bottom of the Insert Image dialog.
- 3) Move the picture to the desired location.
- 4) The picture will automatically resize to fill the area of the content box. Follow the directions in the note below when manually resizing a graphic.






Note

When resizing a graphic, right-click the picture. Select **Position and Size** from the context menu and make sure that **Keep ratio** is selected. Then adjust the height or width to the size you need. As you adjust one dimension, both dimensions will change to keep the width and height ratio the same, ensuring that the picture will not become distorted. Remember also that resizing a bitmap image will reduce its quality; it is better to create an image of the desired size outside of Impress.

Adding tables

To add basic tables to a slide:

- 1) Go to **Insert > Table** on the Menu bar, or click the **Table** icon  on the Standard toolbar.
- 2) If there is a table already on the slide and it is selected, click the **Table** icon  on the Table toolbar. The Table toolbar is only visible after selecting **View > Toolbars > Table** on the Menu bar and when a table is selected.
- 3) Alternatively, and after inserting a new slide into your presentation, click the **Insert Table** icon (Figure 16 on page 18).
- 4) Select the number of rows and columns required from the Insert Table dialog that opens.
- 5) Alternatively, click the small triangle to the right of the **Table** icon  and select the number of rows and columns by dragging the cursor.
- 6) Select a design style from the available options for your table in the Table Design deck in the Properties section of the Sidebar (Figure 24). If the *Table Design* section does not automatically open after inserting or selecting a table, click on the Properties icon at the side of the Sidebar.



Note

Selecting from any of the styles in the Table Design section in the Sidebar creates a table based on that style. If you create a table by another method, you can still apply a style of your choice later.

The Table toolbar in Impress offers the same functions as the Table toolbar in Writer, with the exception of the calculation functions Sort and Sum. To use Sum and Sort in your presentation, you have to insert a Calc spreadsheet.

After the table is created, you can modify it by adding and deleting rows and columns, adjusting width and spacing, adding borders, background colors and so on. For more information on working with tables see the *Impress Guide Chapter 3 Adding and Formatting Text* and the *Writer Guide Chapter 9 Working with Tables*.

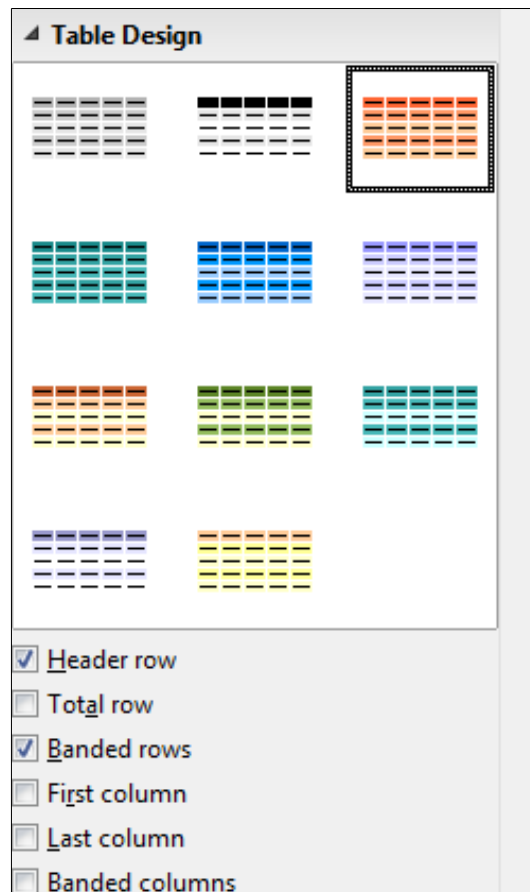



Figure 24: Sidebar Table Design section

Entering data into table cells is similar to working with text box objects. Click in the cell you wish to add data to and begin typing. To move around cells quickly, use the following keyboard options:

- Press the *arrow* keys to move the cursor to another cell if the cell is empty, or to the next character if the cell already contains text.
- Press the *Tab* key to move to the next cell on the right and press *Shift+Tab* to move to the next cell on the left..

Adding charts

To insert a chart in a slide:

- 1) Go to **Insert > Chart** on the Menu bar or click on the **Chart** icon  in the Standard toolbar.
- 2) Alternatively and after inserting a new slide, click on the **Insert Chart** icon (Figure 16 on page 18).
- 3) Impress will insert a default chart and open the Chart dialog. To modify the chart type, insert your own data and change the formatting, refer to the *Impress Guide*.

Adding media files

To insert media files, such as music and movie clips, in a slide:

- 1) Go to **Insert > Audio or Video** on the Menu bar.
- 2) Alternatively and after inserting a new slide, click on the **Insert Audio or Video** icon (Figure 16 on page 18).

- 3) A media player will open at the bottom of the screen and you can preview the media.
- 4) When an audio file is inserted, the contents box will show a loudspeaker image.

Adding graphics, spreadsheets, and other objects

Graphics, such as shapes, callouts, and arrows, are often useful to complement the text on a slide. These objects are handled much the same way as graphics in Draw. For more information, see the *Draw Guide Chapter 7 Getting Started with Draw*, or the *Impress Guide Chapters 4, 5, and 6*.

Spreadsheets embedded in Impress include most of the functionality of Calc spreadsheets and are capable of performing extremely complex calculations and data analysis. If you need to analyze your data or apply formulas, these operations are best performed in a Calc spreadsheet and the results displayed in an embedded Calc spreadsheet or even better in an Impress table.

Alternatively, go to **Insert > Object > OLE Object** on the Menu bar. You can select from options that include a LibreOffice 5.0 Spreadsheet. This opens a spreadsheet in the middle of the slide and the menus and toolbars change to those used in Calc. You can start adding data, though you may have to resize the visible area on the slide. You can also insert an existing spreadsheet and use the viewport to select the data that you want to display on your slide.

Impress offers the capability of inserting into a slide various other types of objects such as Writer documents, Math formulas, Draw drawings, or another presentation. For details on using these objects, refer to the *Impress Guide Chapter 7 Including Spreadsheets, Charts, and Other Objects*.

Working with slide masters and styles

A slide master is a slide that is used as the starting point for other slides. It is similar to a page style in Writer and it controls the basic formatting of all slides based on it. A slide show can have more than one slide master.



Note

LibreOffice uses three terms for a slide that is used to create other slides: *master slide*, *slide master*, and *master page*. This book uses the term *slide master*, except when describing the user interface.

A slide master has a defined set of characteristics, including background colors, graphics, gradients; and other objects (such as logos, decorative lines and so on), headers and footers, placement and size of text frames, and text format.

Styles

All of the characteristics of slide masters are controlled by styles. New slides that you create using a slide master have styles that are inherited from the slide master which was used. Changing a style in a slide master results in changes to all slides based on that slide master, but you can modify individual slides without affecting the slide master.



Note

Although it is highly recommended to use the slide masters whenever possible, there are occasions where manual changes are needed for a particular slide, for example to enlarge the chart area when the text and chart layout is used.

Slide masters have two types of styles associated with them: *presentation styles* and *image styles*. The prepackaged presentation styles can be modified, but new presentation styles cannot be

created. For image styles, you can modify the prepackaged styles and also create new image styles.

Presentation styles affect three elements of a slide master: background, background objects (such as icons, decorative lines, and text frames), and text placed on the slide. Text styles are further divided into *Notes*, *Outline 1* through *Outline 9*, *Subtitle*, and *Title*. The outline styles are used for the different levels of the outline to which they belong. For example, *Outline 2* is used for the sub-points of *Outline 1*, and *Outline 3* is used for the sub-points of *Outline 2*, and so on.

Image styles are not restricted and can affect many of the elements of a slide. Note that text styles exist in both the presentation and image style selections.

Slide masters

Impress comes with a collection of slide masters. These slide masters are shown in the Master Pages section of the Sidebar (Figure 25) and has three subsections: *Used in This Presentation*, *Recently Used*, and *Available for Use*. Click the + sign next to the name of a subsection to expand it to show thumbnails of the slides, or click the – sign to collapse the subsection to hide the thumbnails.

Each of the slide masters shown in the *Available for Use* list is from a template of the same name. If you have created your own templates, or added templates from other sources, slide masters from those templates will also appear in this list.



Figure 25: Sidebar Master Pages section

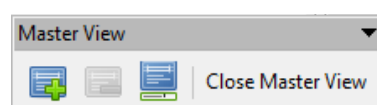



Figure 26: Master View toolbar


Creating a slide master

Creating a new slide master is similar to modifying the default slide master.

- 1) Enable editing of slide masters by selecting **View > Slide Master** on the Menu bar and the **Master View** toolbar opens (Figure 26). If the Master View toolbar does not appear, go to **View > Toolbars** and select **Master View**.
- 2) On the Master View toolbar, click the **New Master** icon .
- 3) A new slide master appears in the Slides pane. Modify this slide master to suit your requirements.
- 4) It is also recommended that you rename this new slide master. Right-click on the slide in the Slides pane and select **Rename master** from the context menu.
- 5) When finished creating a slide master, click **Close Master View** on the Master View toolbar and return to normal slide editing mode.

Applying a slide master

To apply a slide master to all the slides in your presentation:

- 1) Click on the Master Pages icon  in the Sidebar to open the Master Pages section (Figure 25).
- 2) To apply one of the slide masters from the available selection to *all slides* in your presentation, right-click on it and select **Apply to All Slides** on the context menu.

To apply a different slide master to one or more selected slides:

- 1) In the Slide Pane, select the slide or slides where you want to use a new slide master.
- 2) In the Master Pages section on the Sidebar, right-click on the slide master you want to apply to the selected slides, and select **Apply to Selected Slides** on the context menu.

Loading additional slide masters

Sometimes, in the same set of slides, you may need to mix multiple slide masters that may belong to different templates. For example, you may need a completely different layout for the first slide of the presentation, or you may want to add to your presentation a slide from a different presentation (based on a template available on the hard disk).

- 1) Go to **Slide > Slide Design** on the Menu bar or right-click on a slide in the Slides Pane and select **Slide Design** from the context menu to open the Slide Design dialog (Figure 27). This dialog shows the slide masters already available for use.
- 2) To add more slide masters, click the **Load** button to open the Load Slide Design dialog (Figure 28).
- 3) Select in the Load Slide Design dialog the template from which to load the slide master and click **OK**.
- 4) Click **OK** again to close the Slide Design dialog.
- 5) The slide masters in the template you selected to use are now shown in the *Available for use* subsection of Master Pages.

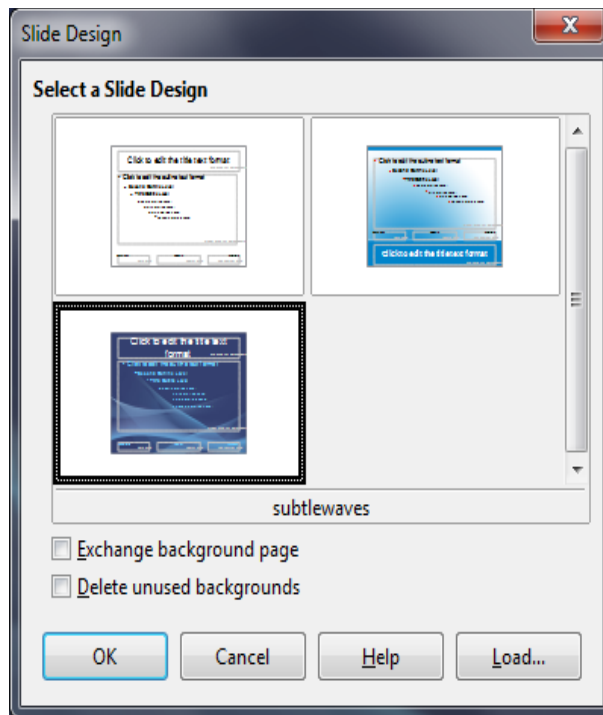


Figure 27: Slide Design dialog

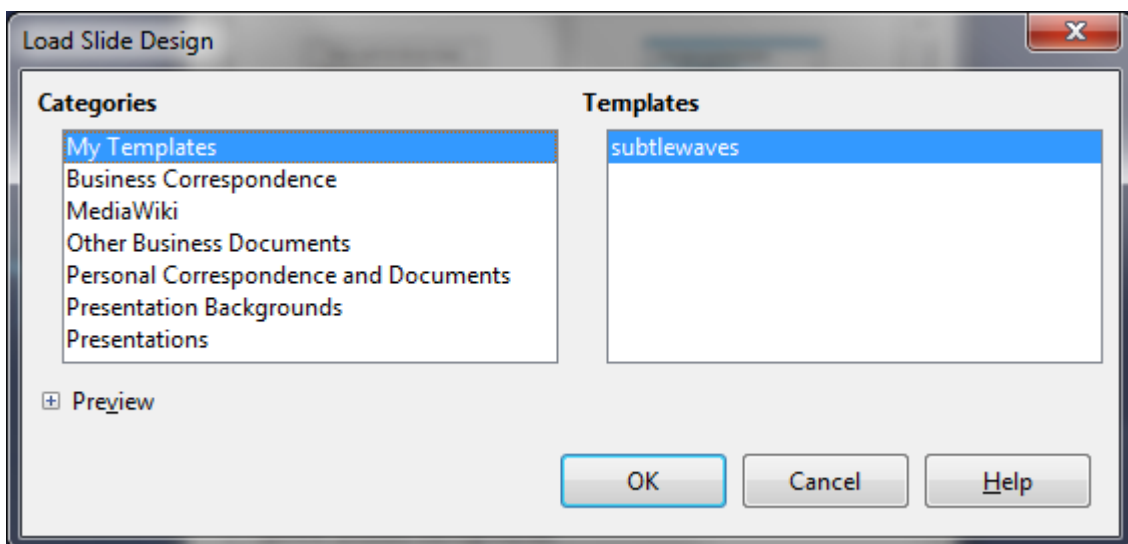


Figure 28: Load Slide Design dialog



Note

The slide masters you have loaded will also be available the next time you load the presentation. If you want to delete the unused slide masters, click the corresponding checkbox in the Slide Design dialog. If the slide master was not used in the presentation, it is removed from the list of available slide masters.



Tip

To limit the size of the presentation file, you may want to minimize the number of slide masters used.

Modifying a slide master

The following items can be changed on a slide master:

- Background (color, gradient, hatching, or bitmap)
- Background objects (for example, a logo or decorative graphics)
- Size, placement, and contents of header and footer elements to appear on every slide
- Size and placement of default frames for slide titles and content

For more information on modifying slide masters, see the *Impress Guide Chapter 2 Using Slide Masters, Styles, and Templates*.

- 1) Select **View > Slide Master** from the Menu bar. This unlocks the properties of a slide master so you can edit it.
- 2) Select a slide master in *Master Pages* in the Slides pane.
- 3) Select an object on the slide master in the Workspace and the Sidebar will display the property options that can be changed for the selected object. Figure 29 shows a graphic object selected with the *Graphic* properties section open on the Sidebar.
- 4) Make all necessary changes to the slide master, then click the **Close Master View** icon on the Master View toolbar or go to **View > Normal** on the Menu bar to exit from editing slide masters.
- 5) Save your presentation file before continuing.



Note

Any changes made to one slide when in Master View mode will appear on *all* slides using this slide master. Always make sure you Close Master View and return to Normal view before working on any of the presentation slides.

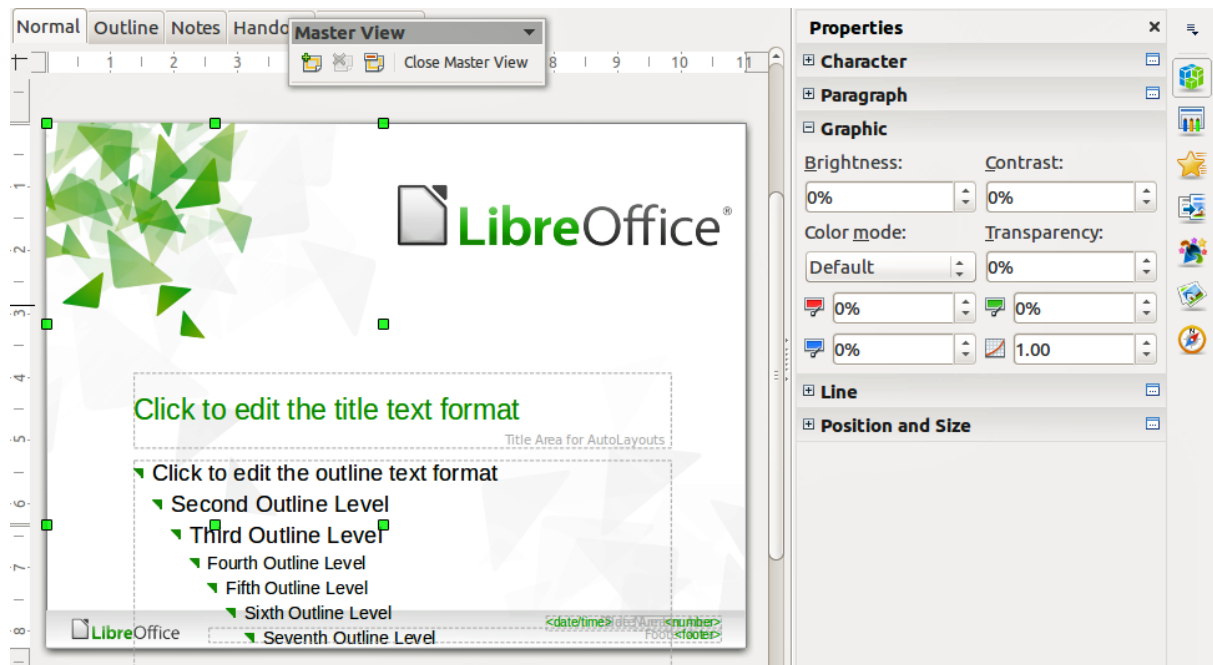


Figure 29: Editing a slide master



Note

The changes made to one of the slides in Normal view (for example, changes to the bullet point style, the color of the title area, and so on) will not be overridden by subsequent changes to the slide master. There are cases, however, where it is desirable to revert a manually modified element of the slide to the style defined in the slide master. To revert back to default formatting, select the element and select **Format > Default Formatting** from the Menu bar.

Adding text, footers, and fields to all slides

A slide master can have text, footers, or fields added so that they appear on every slide in your presentation. Headers are not normally added to slides.

Text

- 1) Go to **View > Slide Master** on the Menu bar to open Master View (Figure 30).
- 2) On the Drawing toolbar, select the **Text** icon or press the *F2* key.
- 3) Click and drag in the master page to draw a text object and then type or paste your text into the text object.
- 4) Go to **View > Normal** on the Menu bar or click on **Close Master View** on the Master View toolbar when you have finished entering text objects that you want to appear on every slide in your presentation.

Footers

To add a footer to your slides:

- 1) Go to **View > Slide Master** on the Menu bar to open Master View (Figure 30).
- 2) Go to **Insert > Field** or **Insert > Page Number** on the Menu bar and time to open the Header and Footer dialog (Figure 31).
- 3) Select the type of date and time and type in the footer text and slide number from the available options in the dialog.

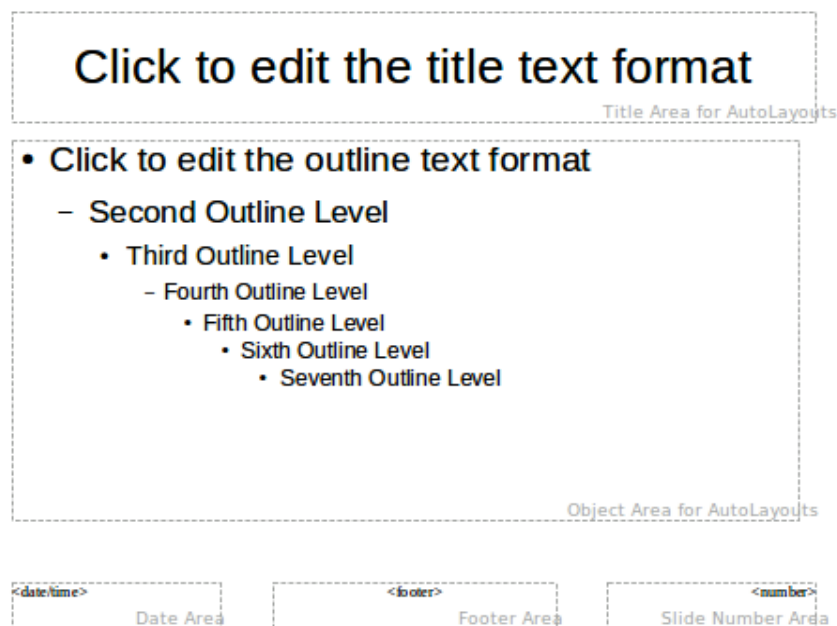


Figure 30: Example master view

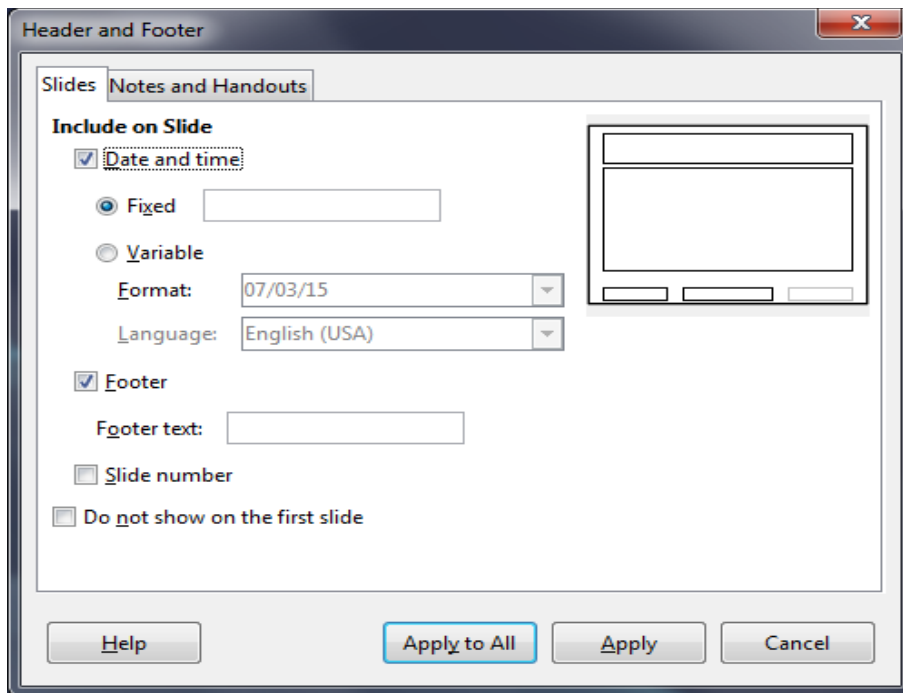


Figure 31: Footer dialog in Impress

- 4) Click **Apply to All** to apply your changes to all the slide masters in your presentation, or click **Apply** to apply your changes to the selected slide master in your presentation.
- 5) Alternatively, you can add the date/time, footer text and slide number directly into their respective areas as shown in Figure 30.



Note

Normally only footers are used on a slide. To create a header, you can use a text box as explained in “Text” on page 33.

Fields

To add a field into an object or as a separate object on a slide, select **Insert > Fields** on the Menu bar and select the required field from the submenu. If you want to edit this field in your slide, see the *Impress Guide Chapter 3 Adding and Formatting Text* for more information.

The fields you can use in Impress are as follows:

- Date (fixed)
- Date (variable): updates automatically when you reload a file
- Time (fixed)
- Time (variable): updates automatically when you reload a file
- Author: first and last names listed in the LibreOffice user data
- Page Number: the slide number in Impress
- Page Count: the number of slides in your presentation
- File Name

Tip

To change the author information, go to **Tools > Options > LibreOffice > User Data** on the Menu bar.

To change the number format (1,2,3 or a,b,c or i,ii,iii, and so on) for the number field, go to **Slide > Page/Slide Properties...** on the Menu bar and then select a format from the *Format* list in the **Layout Settings** area.

To change a paragraph style throughout your presentation, open the Styles and Formatting dialog and modify the appropriate presentation style.

Adding comments to a presentation

Impress supports comments similar to those in Writer and Calc.

In Normal View, go to **Insert > Comment** on the Menu bar to open a blank comment (Figure 32). A small box containing your initials appears in the upper left-hand corner of the slide, with a larger text box beside it. Impress automatically adds your name and the current date at the bottom of the text box.

Type or paste your comment into the text box. You can optionally apply some basic formatting to the comment by selecting it, right-clicking, and choosing from the context menu that opens. This menu allows you to apply formatting to selected text, delete the current comment, delete all comments from the same author, or delete all comments in the presentation.

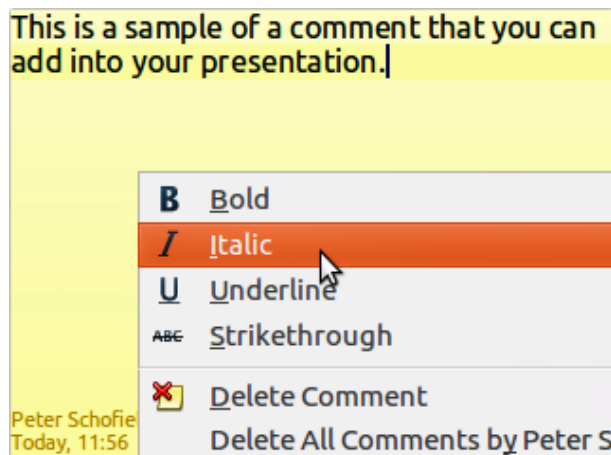


Figure 32: Inserting comments

You can move the small comment markers to anywhere you wish on the slide. Typically you might place it on or near an object you refer to in the comment.

To show or hide the comment markers, choose **View > Comments**.

Select **Tools > Options > User Data** to configure the name you want to appear in the comment.

If more than one person edits the document, each author is automatically allocated a different background color for their comments.

Setting up a slide show

As mentioned in “Modifying the slide show” on page 20, Impress allocates reasonable default settings for slide shows, while at the same time allowing for customizing many aspects of the slide show experience. This section covers only some aspects; more advanced techniques are explained in the *Impress Guide Chapter 9 Slide Shows*.

Most of the tasks are best done in Slide Sorter view where you can see most of the slides simultaneously. Go to **View > Slide Sorter** on the Menu bar or click the Slide Sorter tab at the top of the Workspace.

One slide set – multiple presentations

In many situations, you may find that you have more slides than the time available to present them or you may want to provide a rapid overview without dwelling on the details. Rather than having to create a new presentation, you can use two tools that Impress offers: hiding slides and custom slide shows.

Hiding slides

- 1) Select the slide you want to hide in the Slide Pane or Slide Sorter view on the Workspace area.
- 2) Go to **Slide > Hide Slide** on the Menu bar or right-click on the slide thumbnail and select **Hide Slide** from the context menu. Hidden slides are marked by a diagonal bars across the slide.


Custom slide shows

If you want to create a custom slide show from the same presentation:

- 1) Select the slides you want to use in your custom slide show.
- 2) Go to **Slide Show > Custom Slide Show** on the Menu bar.
- 3) Click on the New button to create a new sequence of slides and save it with a different name. You can have as many slide shows as you want from a single presentation.

Slide transitions

Slide transition is the animation that is played when a slide is changed for the next slide in your presentation. You can configure the slide transition from the Slide Transition section in the Tasks Pane.

- 1) Go to **Slide > Slide Transition** on the Menu bar or click on the Slide Transition icon  on the Sidebar to open the options available for slide transitions.
- 2) Select the desired transition, the speed of the animation, and whether the transition should happen when you click the mouse (preferred) or automatically after a certain number of seconds.
- 3) Click **Apply to All Slides** to apply the transition for all of your presentation or continue selecting transitions to place between each slide in your presentation.



Tip

The Slide Transition section has a very useful choice: Automatic preview. Select its checkbox and when you make any changes in a slide transition, the new slide is previewed in the Slide Design area, including its transition effect.

Slide advance

You can set the presentation to advance automatically to the next slide after a set amount of time from the Slide Transition section in the Sidebar.

- 1) Go to **Advance slide** and select the **Automatically after** option.
- 2) Enter the required amount of time in seconds that each slide will be displayed.
- 3) Click on the **Apply to All Slides** button to apply the same display time to all slides.

To apply a different display time to each slide in your presentation:


- 1) Go to **Slide Show > Rehearse Timings** on the Menu bar and the slide show starts.
- 2) When you are ready to advance to the next slide, mouse click on the display background or press the right arrow or space bar on your keyboard.
- 3) Impress will memorize the timings for each slide and will advance to the next slide automatically using these timings when you run the slide show.

To restart a slide show automatically after the last slide has been displayed:

- 1) Go to **Slide Show > Slide Show Settings** on the Menu bar.
- 2) Select **Auto** and the timing of the pause between slide shows.
- 3) Click **OK** when you have finished.

Running a slide show

To run a slide show, do one of the following:

- Click **Slide Show > Start from first Slide** on the Menu bar.
- Click the **Start from first Slide** icon  on the Presentation toolbar.
- Press *F5* on the keyboard.

If the slide advance is set to *Automatically after X sec*, let the slide show run by itself.

If the slide advance is set to *On mouse click*, do one of the following to move from one slide to the next:

- Use the arrow keys on the keyboard to go to the next slide or to go back to the previous one.
- Click the mouse to move to the next slide.
- Press the spacebar on the keyboard to advance to the next slide.

Right-click anywhere on the screen to open a context menu where you can navigate through the slides and set other options.

To exit the slide show at any time including when the slide show has ended, press the *Esc* key.

Presenter Console

LibreOffice Impress has a Presenter Console function that can be used when an extra display for presentation has been connected to your computer. The Presenter Console (Figure 33) provides extra control over slide shows by using different views on your computer display and on the display that the audience sees. The view you see on your computer display includes the current slide, the upcoming slide, any slide notes, and a presentation timer.

For more information and details about using the Presenter Console, see the *Impress Guide Chapter 9 Slide Shows*.

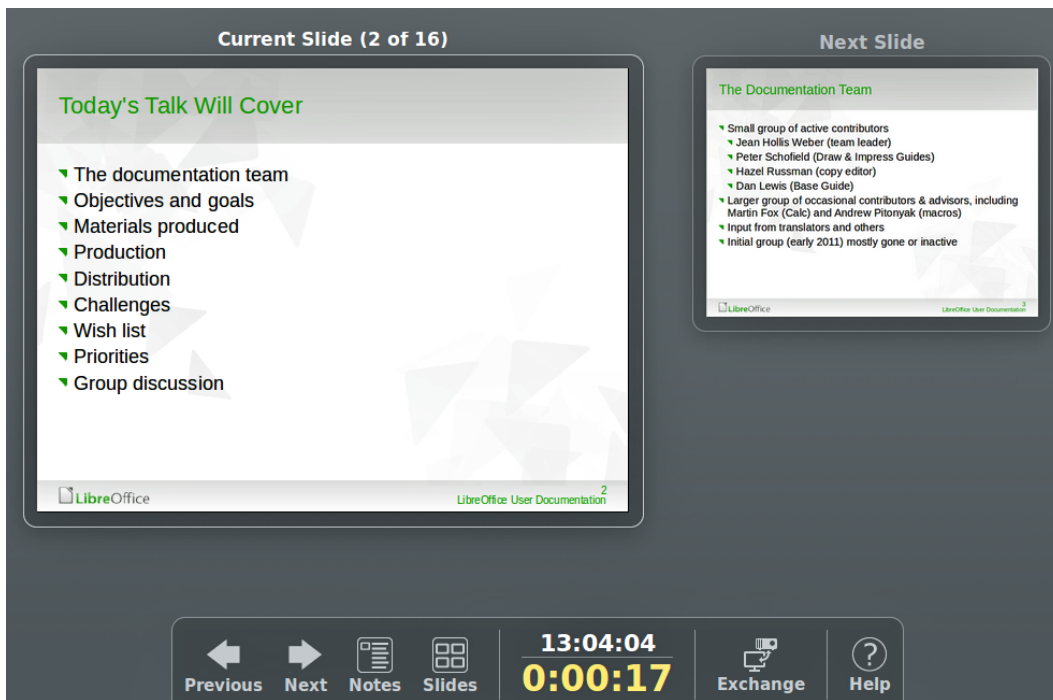


Figure 33: Impress Presenter Console

Using Impress Remote control

Impress Remote is a mobile application developed by the community for Android and iOS systems that allows you to control a live presentation with a mobile device such as a phone or tablet.

The connection between your mobile device and the computer running your presentation is made through a Bluetooth pairing or a local network connection between the two.

Getting Impress Remote

To get the software, access your mobile device application store, either Google Play Store for Android devices or Apple Store for IOs devices. Search for “Impress Remote” and select the one that is from The Document Foundation and install it in your device.

Connecting the mobile device to the computer

Activate Bluetooth on both devices, then pair the devices. (Refer to the manuals for your mobile device and computer operating system for instructions on enabling, setting up a Bluetooth identifier, and pairing.)

Once the pairing is established, your mobile device is ready to control your presentation.

Enabling remote control in Impress

An Impress slide show with remote control is not enabled by default. To enable it, go to **Tools > Options > LibreOffice Impress > General** and select **Enable Remote Control** checkbox in the Presentation area of the dialog (Figure 34).

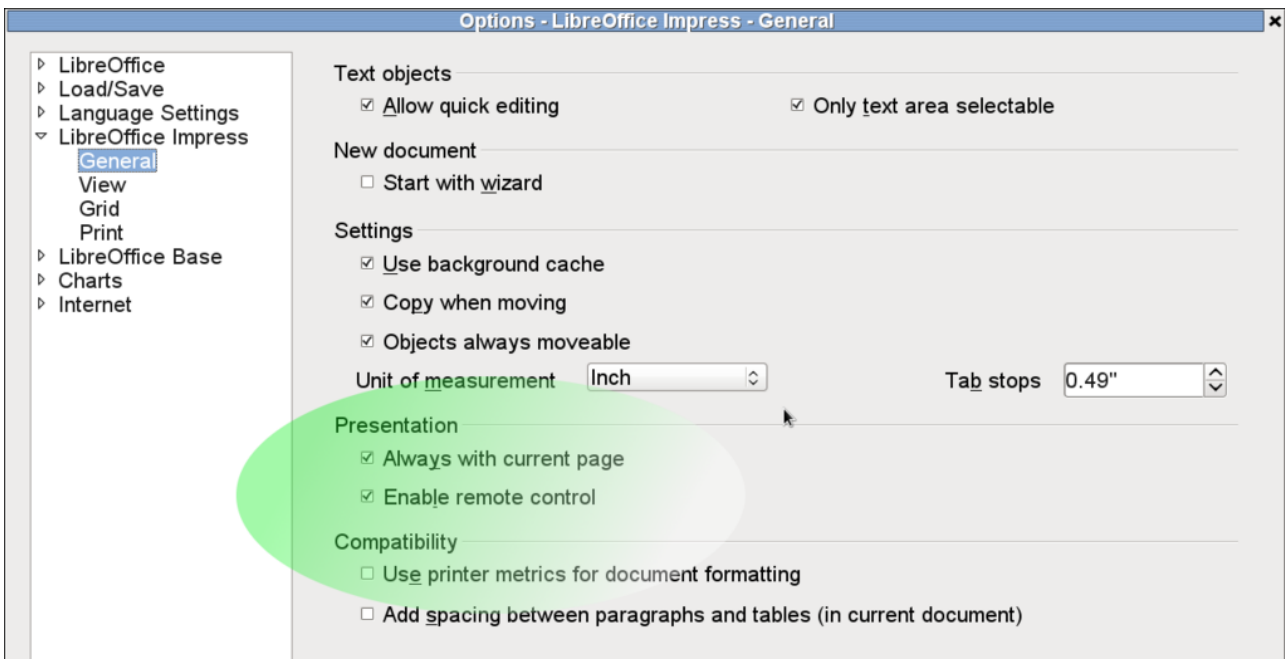


Figure 34: LibreOffice settings for Impress remote control

Running a slide show with Impress Remote

To run a slide show using Impress Remote, follow these steps:

- 1) On both devices, make sure Bluetooth is already enabled and configured.
- 2) On your computer, open the presentation you would like to present.
- 3) On your phone:
 - a) Open Impress Remote from the main menu (Figure 35).
 - b) To select your computer, tap its name. The presentation opened on the computer begins automatically (Figures 36 and 37).

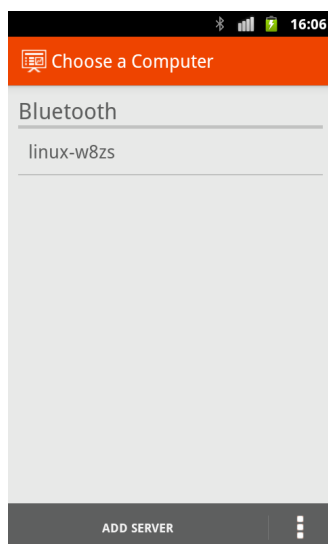


Figure 35: Bluetooth visible device

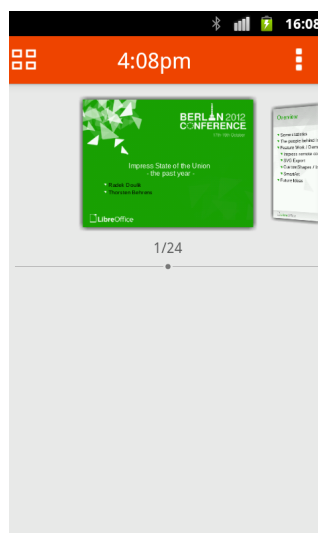


Figure 36: Impress presentation as seen in mobile device

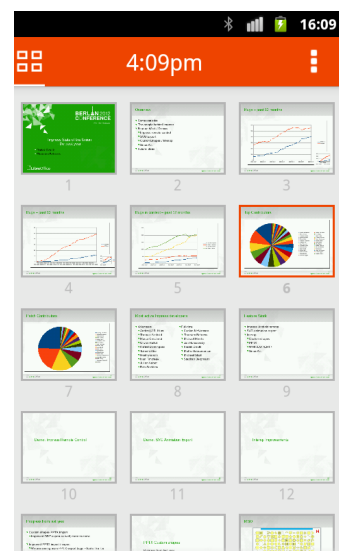


Figure 37: All slides

To advance the presentation

Tap the slide thumbnail or use the phone's physical volume up button.

To go backwards

Double-tap the slide thumbnail or use the phone's physical volume down button.

To skip slide animations and transitions

Swipe left to go to the next slide, or swipe right to go backwards.

To end the presentation, use the Back button of the phone, or open the menu and select **Stop slide show**.